

**Tattletale Model 8**

**OPERATION MANUAL ADDENDUM**

describing the

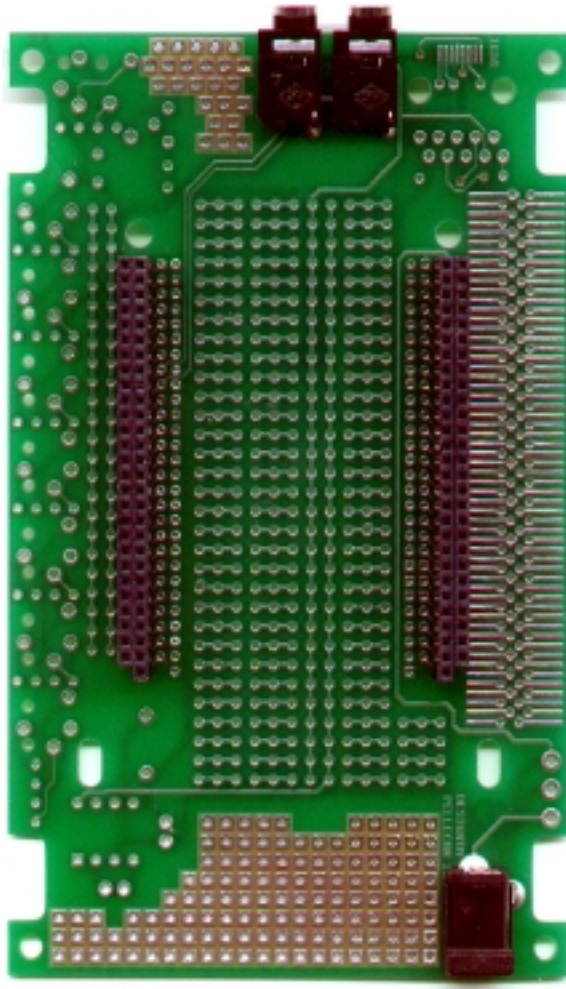
**PR-8v2 Breadboard**

**Onset Computer Corporation  
470 MacArthur Boulevard  
Bourne Massachusetts 02532**

**Tel. (508) 759-9500  
Fax (508) 759-9100**

**[www.onsetcomp.com](http://www.onsetcomp.com)**





## Introduction

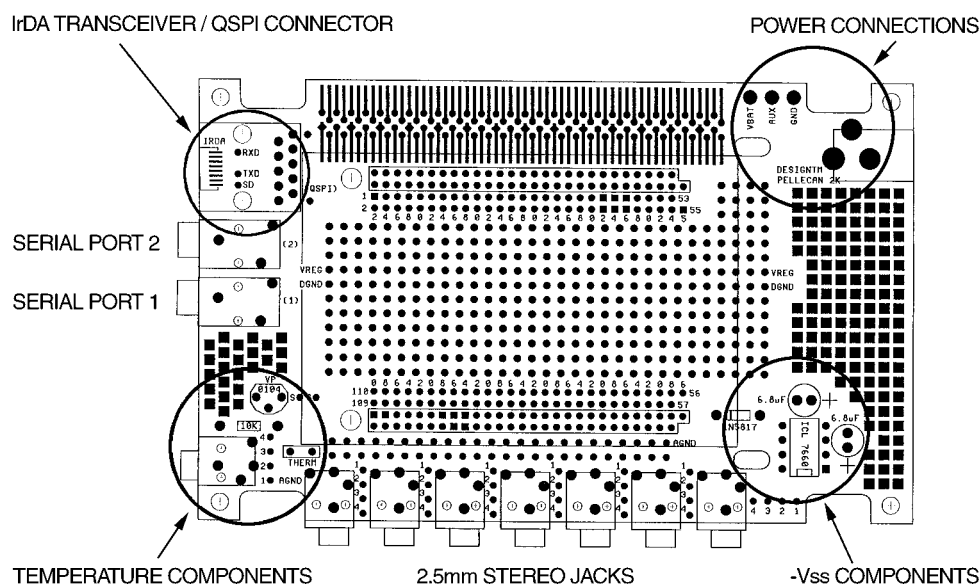
The PR-8v2 breadboard is designed to mate with the pin and socket connectors of the TT8-v2 and the TT8-1M-v2, and provide all basic connectors to get you up and running quickly. Designed to be smaller yet more versatile, it is roughly equivalent in function with the PR-8 used with the TT8 and TT8-1M SquishyBus based TT8s.

The TT8 plugs directly into the top of the PR-8v2, with the processor on the TT8 facing toward the PR-8v2. Note that the sockets are made of one 27-pin and one 28-pin strip. *Important: When plugging in be sure to observe that the pins on the TT8 are lining up correctly with the sockets on the PR-8v2.*

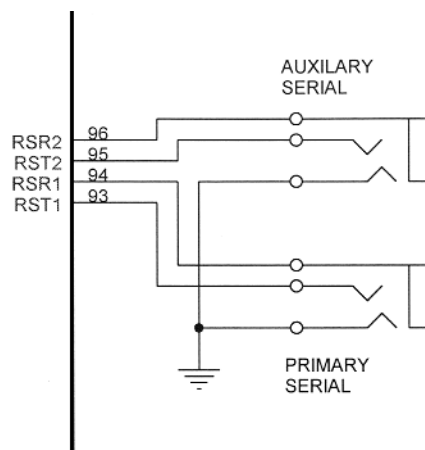
The breadboard provides different pad configurations for different component types, as well as dedicated pads for specific support circuitry and connectors. These features are described later in this document.

As an added feature the PR-8v2 is designed to fit comfortably into a ready-made electronic enclosure, the SERPAC A-27 model, which is supplied in the TT8 Deluxe Developer's kit and also available through distribution.

# MAP OF PROTOTYPING BOARD'S FEATURES

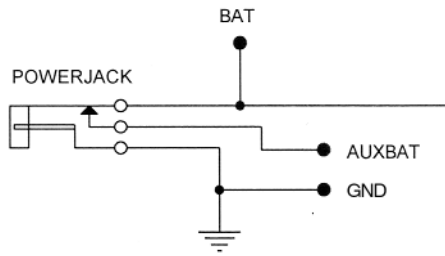


## SERIAL PORTS 1 & 2



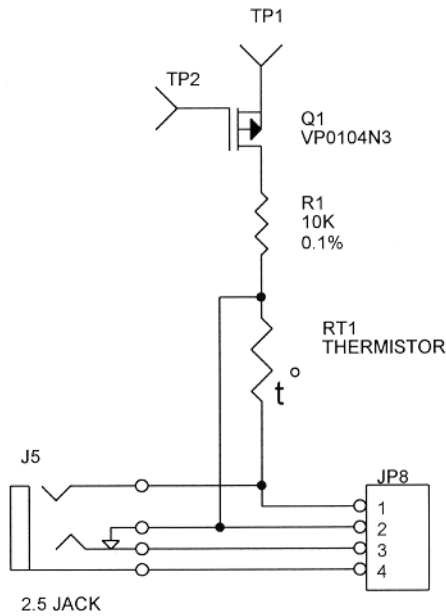
These 3.5mm stereo phone jack connectors are supplied and provide the primary and secondary serial communications.

## POWER CONNECTORS



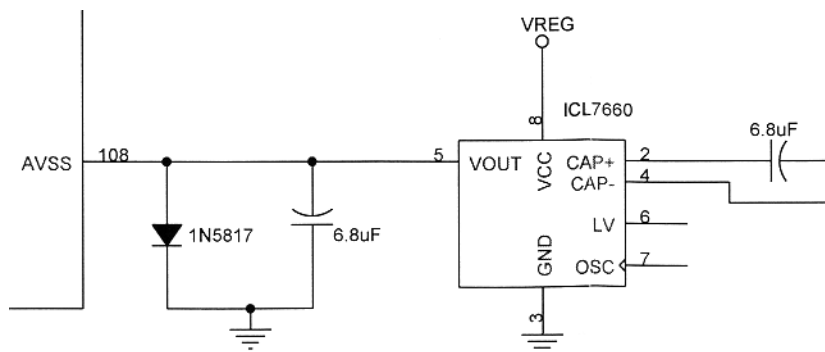
A standard 5.5mm O.D. by 2.1mm I.D. power connector is supplied, which mates with most readily available wall-wart type power supplies. Additionally, three thru-hole pads are included for direct wiring to battery packs etc..

**TEMPERATURE COMPONENTS** *(not supplied)*



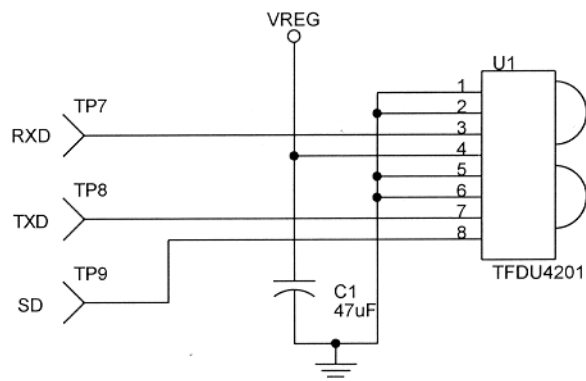
Pads are supplied to allow the easy addition of components to provide a switchable thermistor-based temperature sensing circuit. The parts listing and the circuit diagram are located in the *How to Connect and Setup the Model 8* section of the *Tattletale Installation and Operation Manual*. Refer to this section for complete details.

**-Vss COMPONENTS** (*not supplied*)

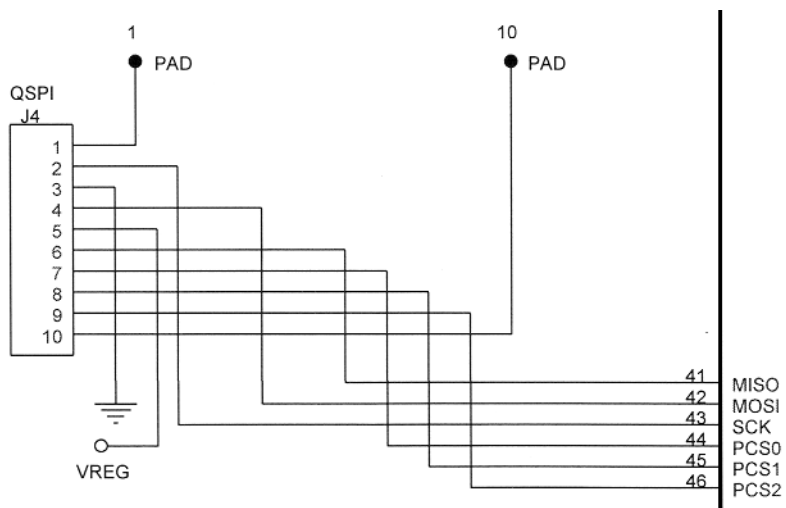


If you require a bipolar supply for A/D conversions this area is setup to accept the components listed in the *Converting the MAX186 A/D converter to Bipolar Operation* section of the *Tattletale Installation and Operation Manual*. Refer to this section for complete details.

### IrDA TRANSCIEVER / QSPI CONNECTOR (not supplied)

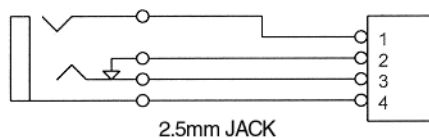


Pads are supplied on the top of the board for mounting a VISHAY TFDU4201 IrDA standard transceiver and a 47uF capacitor. Consult the data sheet (available on the web) for circuit and connection details. IrDA implementation is left to the end user.

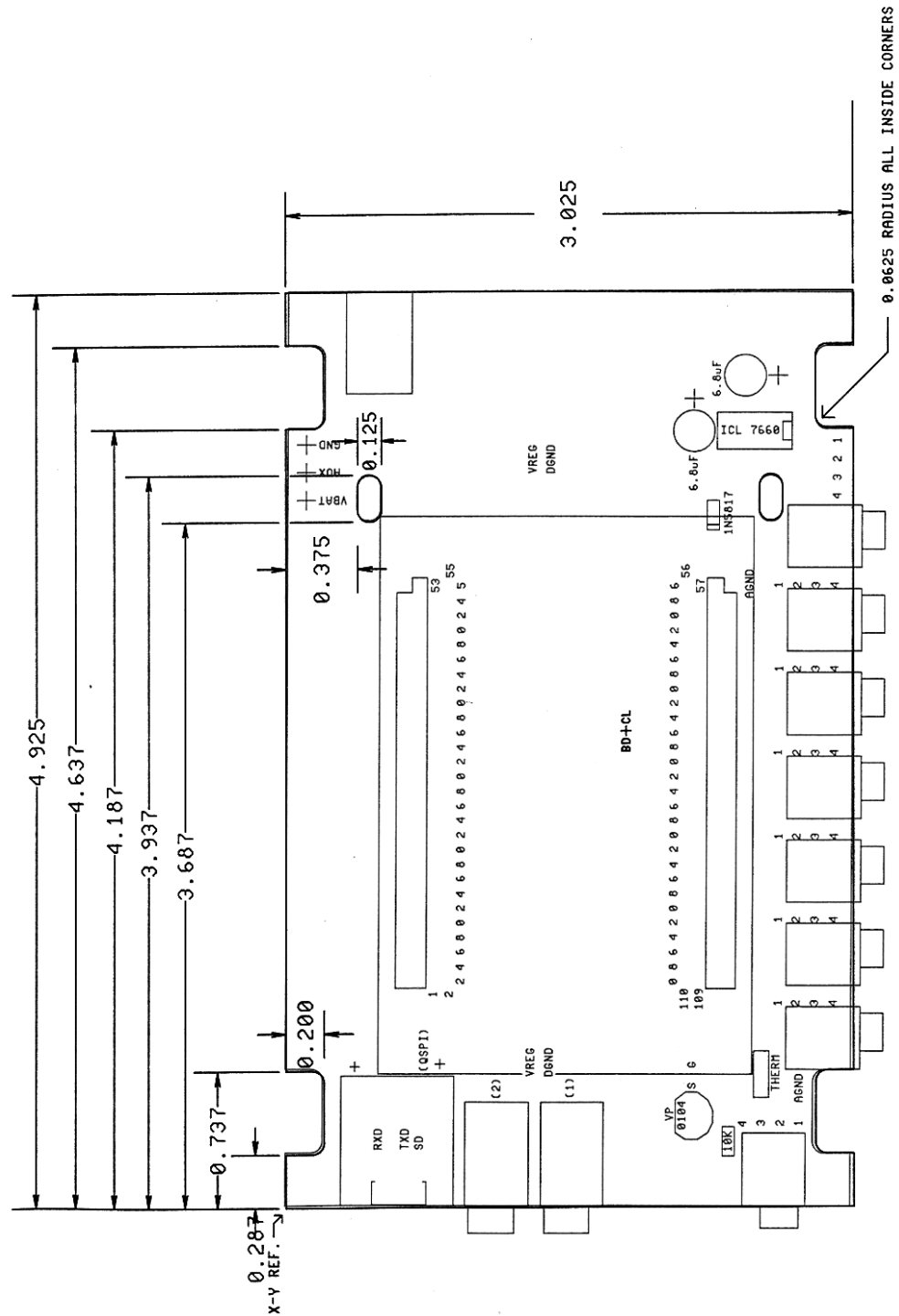


Thru-holes are provided for mounting an 8/10 pin modular connector that directly interfaces with the QSPI bus.

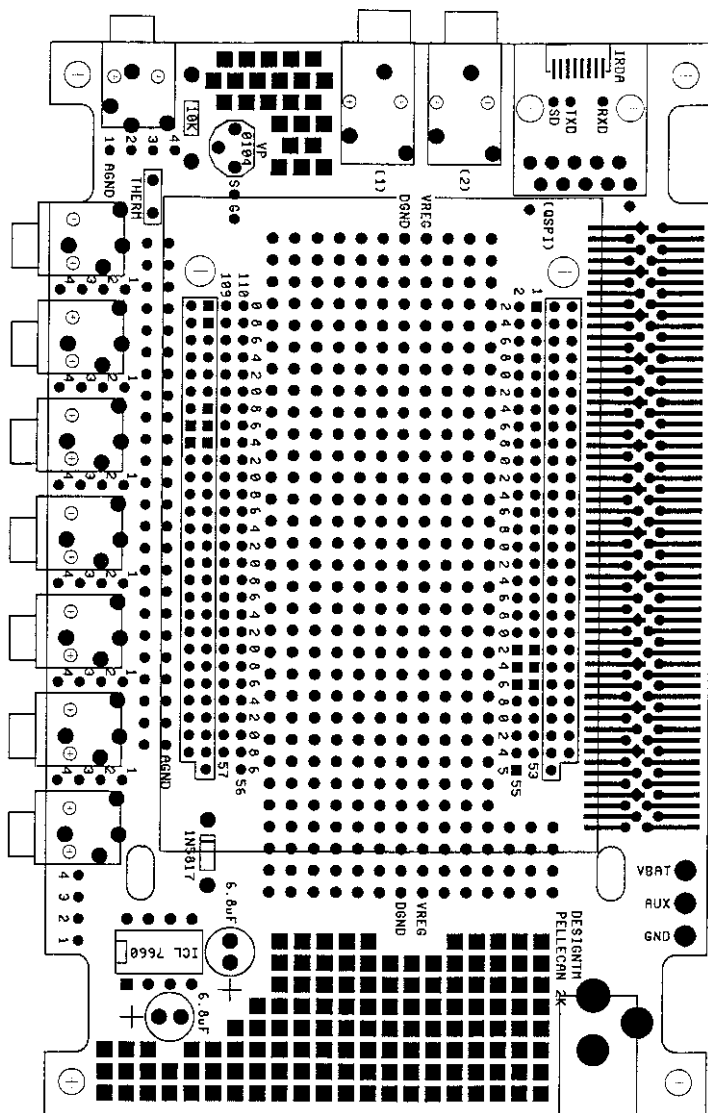
### 2.5mm STEREO JACKS (not supplied)



Pads and thru-hole connections are provided for adding and wiring to 2.5mm stereo jacks if you so desire. These are ideal for attaching Onset® thermistor cables **TMCx-1T** as well as the **CABLE-2.5.STEREO**.



Dimensions of the PR-8v2 Board (in inches)



Enlarged Top View of PR-8v2 Board