

# HOB0® MX2502 Accessories Install Guide

---

Three HOB0 accessories are compatible with the MX2502 PAR/Temp/Tilt Data Logger:

- M-CLP ZebraTech Wiper Clamp
- M-BRK-2 Bracket Mount
- M-FRM Lowering Frame

## M-CLP ZebraTech Wiper Clamp

The M-CLP ZebraTech Wiper Clamp is designed for use with the MX2502 PAR/Temp/Tilt Data Logger. This clamp accessory includes the necessary hardware for securely attaching a ZebraTech Hydro-Wiper to the MX2502 for deployment in underwater monitoring applications.

### Included

- M-CLP ZebraTech Wiper Clamp
- Wing Head 1/4-20 2" Thumb Screw (1)
- M3X0.5 35mm Socket Screws 316SS (6)
- M5x0.8 18mm Hex Bolt 316SS (10)\*
- M5x0.8 Nut 316SS (10)\*
- 5/16" Hex Steel Economy Wrench Zinc (2)\*

\* Used to mount the M-CLP assembly to the M-FRM Lowering Frame OR M-BRK-2 Bracket Mount.

### Not included

- MX2502 PAR/Temp/Tilt Data Logger
- ZebraTech Hydro-Wiper

### Getting started

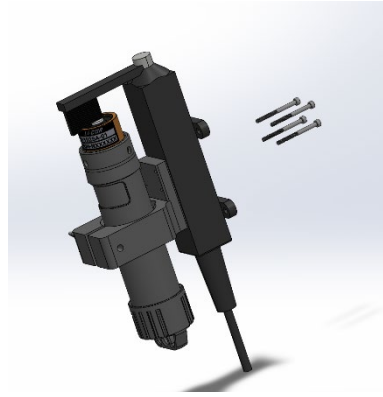
1. Unscrew and remove the cap from the MX2502 PAR/Temp/Tilt Data Logger.
2. With the light sensor facing up, slide the MX2502 into the M-CLP clamp. If necessary, loosen the clamp by turning the wing head thumb screw counterclockwise.

**Note:** Ensure the O-ring on the MX2502 remains properly seated and has not been displaced during insertion.

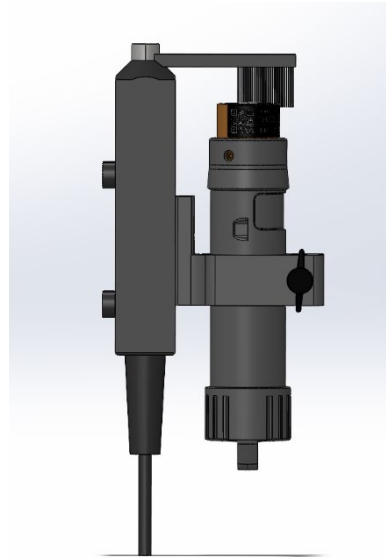


3. Replace the cap by threading it onto the MX2502 and tightening until secure.

4. Position the back plate of the clamp against the front mounting surface of the ZebraTech Hydro-Wiper. Secure the clamp using four provided socket screws, tightening until secure with the provided 5/16" wrench.



5. Loosen the wing head thumb screw and slide the MX2502 up or down within the clamp until the wiper brush makes contact with the top surface of the sensor. Tighten the wing head thumb screw to secure the assembly.  
**Note:** Do not position or tighten the clamp over the water detect icon on the MX2502. Covering this area will prevent the water detect feature from functioning correctly.



6. Attach the M-CLP assembly to the M-BRK-2 Bracket Mount or M-FRM Lowering Frame by following the instructions below.  
**Note:** The bolts, nuts, and wrench provided in the M-CLP kit are used to mount the M-CLP assembly to the M-FRM Lowering Frame or M-BRK-2 Bracket Mount.

## M-FRM Lowering Frame

The M-FRM Lowering Frame is designed for use with the MX2502 PAR/Temp/Tilt Data Logger, ZebraTech Hydro-Wiper, and M-CLP ZebraTech Wiper Clamp. This mounting accessory includes the necessary hardware for securing and lowering the complete wiper and logger assembly for long-term underwater monitoring applications, including buoy deployments.

### Included

- Lowering Frame
- 11" long life UV resistant nylon zip ties (10)

### Not included

- MX2502 PAR/Temp/Tilt Data Logger
- M-CLP ZebraTech Wiper Clamp
- ZebraTech Hydro-Wiper (included: battery pack)
- Buoy or mooring hardware

### Getting started

1. Assemble the MX2502 PAR/Temp/Tilt Data Logger, M-CLP ZebraTech Wiper Clamp, and ZebraTech Hydro-Wiper (the "assembly") according to the M-CLP installation instructions (above).
2. Orient the lowering frame so the handle is at the top.

### Selecting a mounting configuration

The M-FRM Lowering Frame supports either single-assembly or dual-assembly deployments. Depending on deployment type, there are two mounting configurations that ensure a balanced installation of the assembly and the battery pack (included with the ZebraTech Hydro-Wiper).

**Note:** The Lowering Frame features an upper suspension ring for attaching a deployment line and a lower weight ring for attaching a stabilizing weight as needed.

- Single-assembly deployment: The battery pack is mounted on the opposite side of the lowering frame and opposite face of the assembly.
- Dual-assembly deployment: Each battery pack is mounted on the same side of the lowering frame and opposite face of its corresponding assembly. For dual assembly deployment, mirror the single-assembly setup (below).

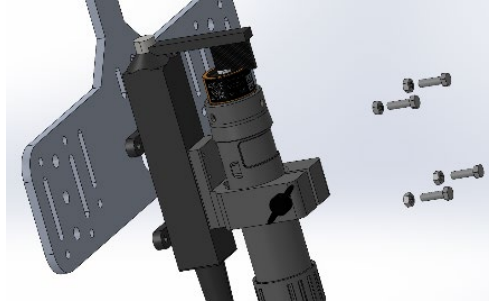


Single-Assembly Deployment

## Installing the assembly and battery pack

The assembly and battery pack can be attached to the lowering frame using either the nuts, bolts, and wrench from the M-CLP kit or the zip ties from the M-FRM kit.

1. Position the back plate of the assembly against the lowering frame, aligning the predrilled holes.
2. If using nuts and bolts, insert four bolts through the holes then thread the nuts onto the opposite side. Tighten until secure using the 5/16" wrench. If using zip ties, insert then tighten until secure.



3. Align the battery pack's mounting plate with the predrilled hole and slot on the lowering frame. If using nuts and bolts, insert one bolt into the predrilled hole and two bolts into the slot then thread the nuts from the opposite side. Tighten until secure using the 5/16" wrench. If using zip ties, insert then tighten until secure.
4. For dual-assembly deployments, repeat steps 1-3 on the opposite side.

## M-BRK-2 Bracket Mount

The M-BRK-2 Bracket Mount is designed for use with the MX2502 PAR/Temp/Tilt Data Logger, ZebraTech Hydro-Wiper, and M-CLP ZebraTech Wiper Clamp. This mounting accessory includes the necessary hardware for securing the complete wiper and logger assembly to a rebar stake for underwater monitoring applications.

### Included

- M-BRK-2 Bracket Mount
- Worm-Drive Clamps 316 Stainless Steel, 11/16" to 1-1/4"

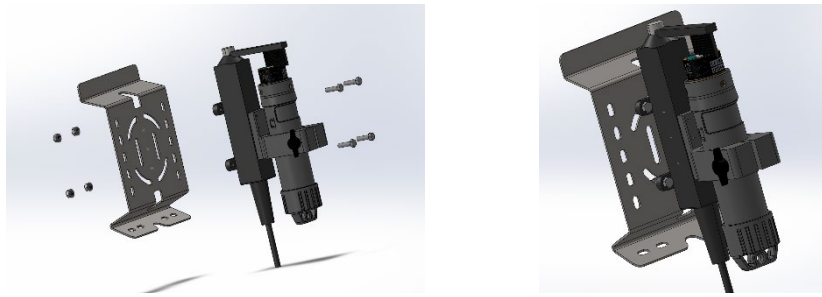
### Not included

- MX2502 PAR/Temp/Tilt Data Logger
- M-CLP ZebraTech Wiper Clamp
- ZebraTech Hydro-Wiper (included: battery pack)
- Rebar stake

### Getting started

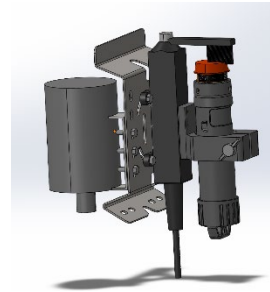
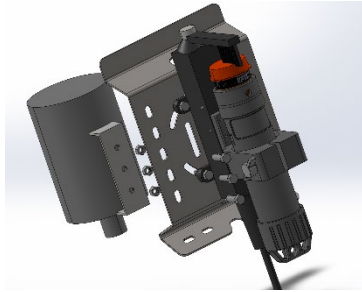
1. Assemble the MX2502 PAR/Temp/Tilt Data Logger, M-CLP ZebraTech Wiper Clamp, and ZebraTech Hydro-Wiper (the "assembly") according to the M-CLP installation instructions (above).
2. Position the back plate of the assembly against the front face of the M-BRK-2 Bracket Mount. Align the mounting holes on the assembly with the four slots on the bracket mount.
3. Using the nuts and bolts from the M-CLP kit, insert two or three bolts into the slotted holes then thread the nuts from the opposite side. Tighten until secure using the 5/16" wrench.

**Note:** The slotted holes allow for rotation of the assembly for tilt correction after mounting.



4. Align the battery pack mounting plate with three of the five predrilled holes on the M-BRK-2 Bracket Mount.

- Using the nuts and bolts from the M-CLP kit, insert three bolts through the predrilled holes then thread the nuts from the opposite side. Tighten until secure using the 5/16" wrench.



- Insert the hose clamp through the two slots on the assembly then wrap it around a rebar stake (size #4 or smaller). Tighten the hose clamp until secure.

