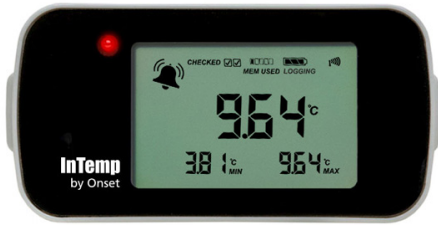


CX403

InTemp Ambient Temperature Storage Monitoring

Multi-use Bluetooth digital data logger with LCD. No probe or glycol bottle



GDP/GMP compliant temperature data logger ideal for Healthcare and Life Science/Pharmaceutical storage monitoring. Ideal applications: General pharmaceutical and vaccine storage, refrigerator, freezer, chamber, and cold room storage monitoring. Meets global Cold Chain, FDA, and EU regulatory requirements.

Important Information

Remote monitoring, process automation, and alarm notifications require the CX5001 Gateway. Gateway and mobile devices must be within 100ft (30.5m) Bluetooth range for data transmission.

Supported Measurements

Temperature

Features

- Internal sensor only (No probe)
- Refrigerated to ambient monitoring
- Easy-to-read display with current and daily min/max temperatures
- Logger setup and download of data in seconds – without a PC or cable
- +/- 0.5°C accuracy for reliable temperature readings
- GDP/GMP compliant
- Integrates with mobile and cloud platforms for a 21 CFR Part 11 compliant solution
- Bluetooth transmission of data and alarm states
- Real-time alerts and automatic data downloads with optional CX Gateway device
- Battery-powered to guard against local power loss

Contact Us

Sales (8am to 5pm ET, Monday through Friday)

- 1-508-743-3309 (US & International)
- +45 6154 5745 (EMEA)

Technical Support (8am to 5pm ET, Monday through Friday)

- Email InTempHelp@onsetcomp.com
- Contact Support online www.onsetcomp.com/intemp/contact/support

Onset Computer Corporation
470 MacArthur Boulevard
Bourne, MA 02532

InTemp Ambient Temperature Storage Monitoring (CX403) Specifications

Ambient Temperature Sensor

Range	-30° to 70°C (-22° to 158°F)
Accuracy	±0.5°C from -15° to 70°C (±0.9°F from 5° to 158°F) ±1.0°C from -30° to -15°C (±1.8°F from -22° to 5°)
Resolution	0.024°C at 25°C (0.04°F at 77°F)
NIST Calibration	Single point NIST calibration

Logger

Radio Power	1 mW (0 dBm)
Transmission Range	Approximately 30.5 m (100 ft) line-of-sight
Wireless Data Standard	Bluetooth Low Energy (Bluetooth Smart)
Logger Operating Range	-30° to 70°C (-22° to 158°F) 0 to 95% RH (non-condensing)
Logging Rate	1 second to 18 hours
Battery Type	Two AAA batteries, user replaceable
Battery Life	1 year, typical with logging interval of 1 minute. Faster logging intervals, remaining connected with the InTemp app, excessive report generation, numerous audible alarms, and paging all impact battery life.
Memory	128 KB (84,650 measurements, maximum)
Full Memory Download Time	Approximately 60 seconds; may take longer the farther the device is from the logger
LCD	LCD is visible from 0° to 50°C (32° to 122°F); the LCD may react slowly or go blank in temperatures outside this range
Dimensions	9.4 x 4.5 x 2.59 cm (3.7 x 1.77 x 1.02 inches)
Weight	90.2 g (3.18 oz)
Environmental Rating	IP54

Notices

Passed RTCA DO160G, part 21H

