

HOBO® RH Sensor Replacement Kit (HUM-RHPCB-2)

For use with U23-002, UX100-023, S-THB-M002, S-THB-M008, ZW-003, ZW-005, and ZW-007 models

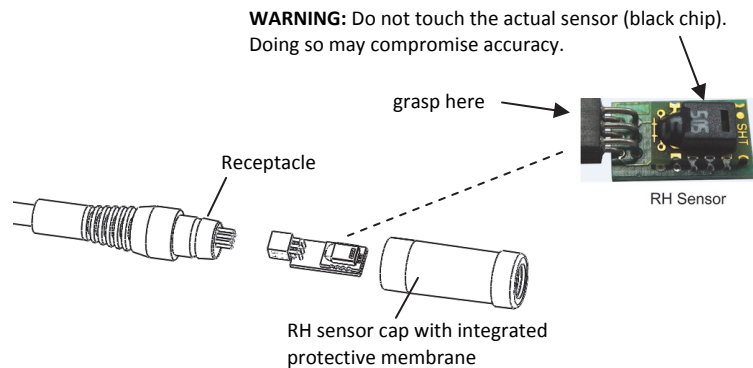
Contents

- RH sensor board
- RH sensor cap with integrated protective membrane
- White adhesive tape
- O-ring for logger end cap (U23-002 only)
- Grease packet for O-ring (U23-002 only)

Replacing the RH sensor

The RH sensor is protected by an ASA styrene polymer cap and a modified hydrophobic polyethersulfone fluid barrier membrane that allows vapor to penetrate while protecting the sensor from condensation. RH sensor performance may degrade over time. To replace the RH sensor:

1. Remove the tape fastening the sensor cap to the receptacle. Discard the tape.
2. Grasp the cap and pull firmly to remove it. Discard the old cap.
3. Note the orientation of the small circuit board containing the RH sensor. Pull it out and discard.



4. Push gently but firmly to install the new sensor in the same orientation.
5. Push the RH new sensor cap onto the receptacle using a slight twisting motion. Do not force the cap. If it does not go on easily, the sensor may be installed backwards. Reverse the sensor and try again.
6. Use the included adhesive tape to fasten the sensor cap to the receptacle. Line up the left edge of the tape where the receptacle begins to taper down.
7. Check logger/data node status in HOBOWare® to verify the RH reading.

Note for U23-002 loggers only: This kit also contains an O-ring and grease packet if you need to replace the O-ring in the logger end cap (the communications window) when replacing the battery. See the logger manual for instructions on replacing the battery.

HOBO® RH Sensor Replacement Kit (HUM-RHPCB-2)

For use with U23-002, UX100-023, S-THB-M002, S-THB-M008, ZW-003, ZW-005, and ZW-007 models

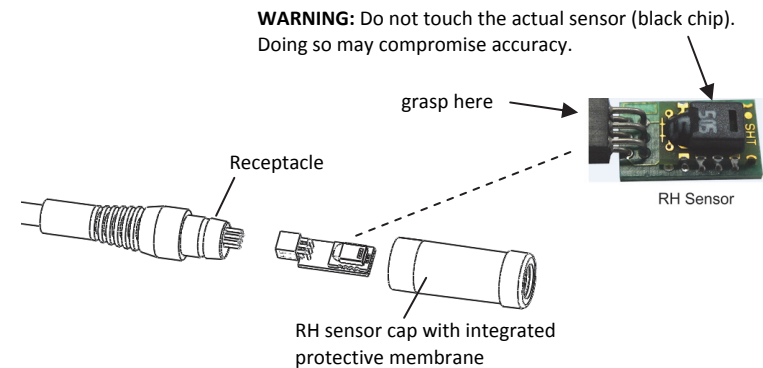
Contents

- RH sensor board
- RH sensor cap with integrated protective membrane
- White adhesive tape
- O-ring for logger end cap (U23-002 only)
- Grease packet for O-ring (U23-002 only)

Replacing the RH sensor

The RH sensor is protected by an ASA styrene polymer cap and a modified hydrophobic polyethersulfone fluid barrier membrane that allows vapor to penetrate while protecting the sensor from condensation. RH sensor performance may degrade over time. To replace the RH sensor:

1. Remove the tape fastening the sensor cap to the receptacle. Discard the tape.
2. Grasp the cap and pull firmly to remove it. Discard the old cap.
3. Note the orientation of the small circuit board containing the RH sensor. Pull it out and discard.



4. Push gently but firmly to install the new sensor in the same orientation.
5. Push the RH new sensor cap onto the receptacle using a slight twisting motion. Do not force the cap. If it does not go on easily, the sensor may be installed backwards. Reverse the sensor and try again.
6. Use the included adhesive tape to fasten the sensor cap to the receptacle. Line up the left edge of the tape where the receptacle begins to taper down.
7. Check logger/data node status in HOBOWare® to verify the RH reading.

Note for U23-002 loggers only: This kit also contains an O-ring and grease packet if you need to replace the O-ring in the logger end cap (the communications window) when replacing the battery. See the logger manual for instructions on replacing the battery.