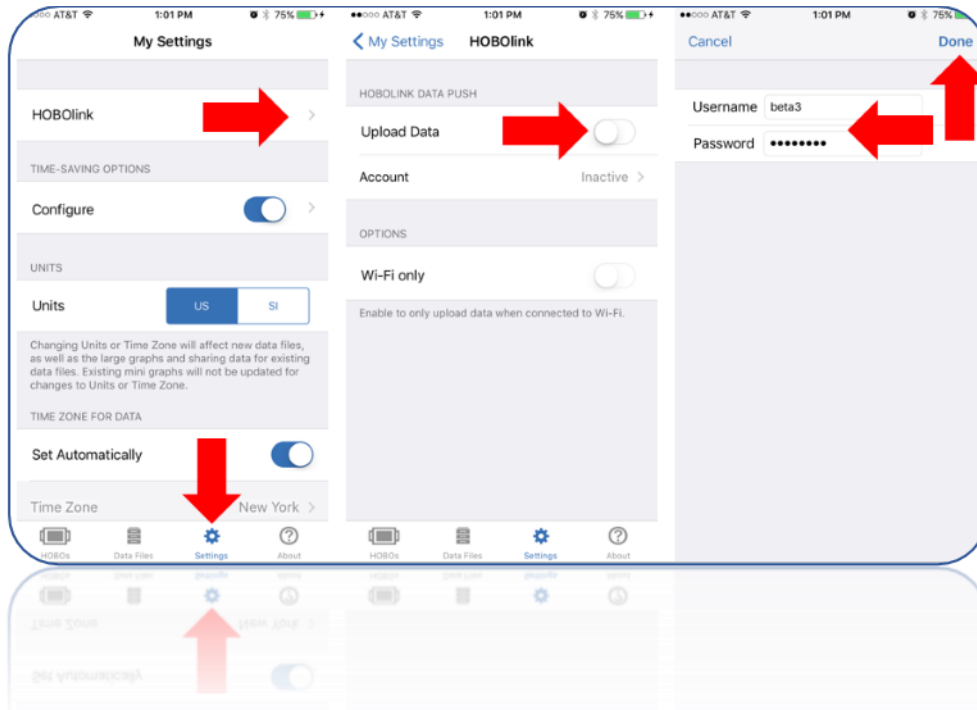


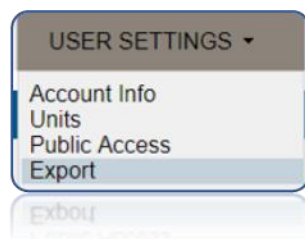
Step 1. Set up a HOBOLink account if you do not have one already. ([HOBOLink](#)) *Note:* There is no need to register an MX logger on HOBOLink.

Step 2. Add your HOBOLink credentials to your HOBOMobile app. See image below.

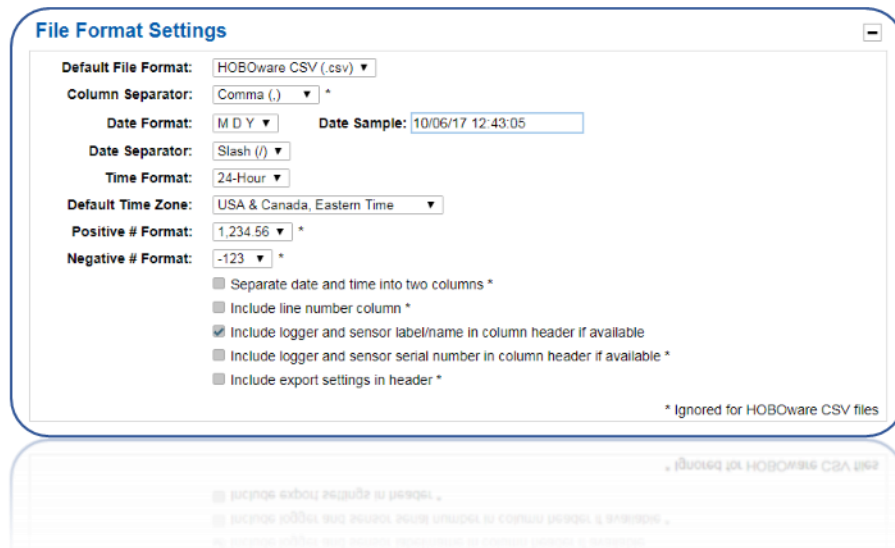


Step 3. Now, when you connect and readout an MX data logger, the data will be uploaded to your HOBOLink account. You can stop here if you are only using HOBOLink for addition safe data storage.

Step 4. Create an Export: Log in to your HOBOLink account. Go to “User Settings” and select “Export.”



- a. For easy importing to HOBOWare there are 2 things to do here, select HOBOWare CSV under file format and the “Include logger and sensor label/name in column header if available” Check box. See Image below.



- b. Continue on creating you export, going through steps 2 (choosing the logger and channels) and 3 (column ordering) in the export screen.
- c. Click save at the bottom of the screen

Step 5. Test. Your screen will change to you export list. Locate the Export that you just created and click “Export”. The file will then be downloaded to you computer.

*Note.* You can move the file from your downloads folder to a desired file location and open from there. (besure not to open and save in Excel as this will modify the file.

Step 6. Import this file to HOBOWare; go to the the File menu, select “Import Text Data” (ctrl T) and locate the resently exported file. Follow the prompts from HOBOWare, check the date and time format and adjust if needed. Click Plot. Now you can use all the imbedded HOBOWare features to work with you data.

Step 7. (optional) Save the file as a project. Go to the file menu and select “save project”

Mike DeLellis  
Tech Support  
1-877-LOGGERS

**ONSET**

[www.onsetcomp.com](http://www.onsetcomp.com)

*For new technical support requests please click [here](#)*

*Let us know about new product or enhancement ideas [here](#)*

